

STADT STASCHO DIESEL- ELECTRIC PROPULSION

MS "SANCO STAR" and MS "SANCO SPIRIT"



SHIP TYPE	:	SEISMIC RESEARCH VESSEL, DNV, ATR, RP
FULL D.E.- PROPULSION	:	STADT STASCHO 2 x 2500 kW 690 V . Low system loss (5 %) Full Electric propulsion system. Low THD (3 %) without power transformers. Patented Sinus technology, no EMC generated .
MAIN PROP. MOTORS	:	STADT KU Type 2 x 2500 kW 690 V
PROPELLER SYSTEM	:	CPP with gear and shaftline 2 x 2500 kW
DIESEL GENERATORS	:	ABC and AVK 3 x 1650 kW 690 V (4 x at S. SPIRIT)
MAIN SWITCHBORDS	:	STADT EPL 690 V, 440 V and 230 V
POWER MANAGEMENT	:	STADT , with Load Reduction Control
THRUSTERS	:	BRUNVOLL 3 x 700 kW CPP
EL. MOTORS	:	STADT HB Type Water Jacket Cooled 700 kW
STARTERS	:	STADT Softstarters 700 kW 690 V
DISTRIBUTION TRAFOS	:	STADT TT, IP 23, 690-440-230 V
SEISMIC COMPRESSORS	:	NEUMANN ESSER 2 x 1100 kW
EL. MOTORS	:	HB Water Jacket Cooled 1100 kW
EL . DRIVES FC	:	STADT FC T Inverter 1100 kW 690 V

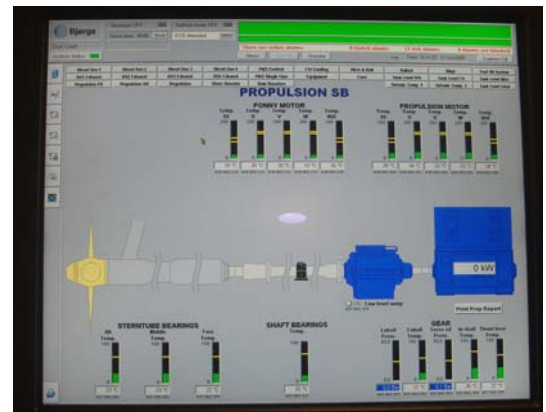
More pictures on the next pages.



MAIN PROPULSION ARRANGEMENT

ELECTRIC MOTOR 2500 kW watercooled.

GEARBOX AND PROPELLER SHAFT.



FROM BOW THRUSTER ROOM :

**STADT SOFTSTARTER CABINET
FOR BRUNVOLL CPP THRUSTER**

**ELECTRIC MOTOR- STADT HB type
WATERCOOLED 700 kW 1200 rpm**



More pictures on the next page.



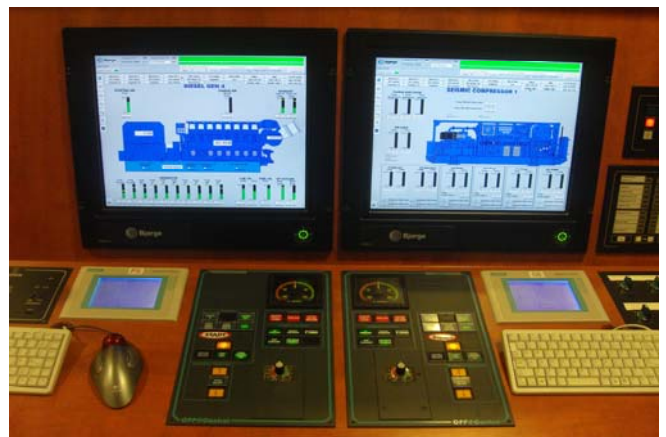
STADT STASCHO IN MSB ROOM



ALSO FROM MAIN SWITCHBOARD ROOM



POWER MANAGEMENT SYSTEM



ENGINE CONTROL ROOM

